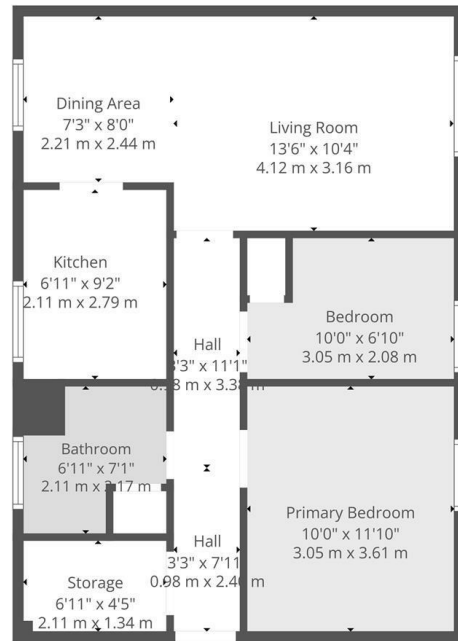


16 Ryland Close, Leamington Spa
£950 Per Month

charlesrose.



Total: 587 sq. Ft, 55 m2
1st Floor: 587 sq. Ft, 55 m2
Excluded Areas: Storage: 30 sq. Ft, 3 M2, Walls: 51 sq. Ft, 4 m2

Floor Plan Created By Cubicasa App. Measurements Deemed Highly Reliable But Not Guaranteed.



Located on the ground floor, this bright and welcoming apartment is perfect if you are looking for a comfortable home with excellent amenities.

Inside, you'll find:
Spacious lounge/ dining room- ideal for relaxing after work
Fitted kitchen with plenty of storage (appliances included)
One double bedroom with natural light
One single bedroom
Bathroom with modern fittings
Entrance hall for added convenience

Available Now
Unfurnished

Council Tax Band B

Holding Deposit £210
Security Deposit £1095

charlesrose.

- 01926 832411
- hello@charlesrose.co.uk
- charlesrose.co.uk

